

**PROJECT**  
Tillbridge Solar

**CLIENT**  
Tillbridge Solar Ltd

**CONSULTANT**  
Aldgate Tower  
2, Leman Street  
London, E1 8FA  
United Kingdom  
T +44-0207-645-2000

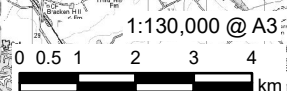
**LEGEND**

- Tillbridge Solar Indicative Cumulative Schemes Boundary Selection
- Zone of Interest - Water Resource (2km)
- Principal Site Boundary
- Cable Route Boundary
- Gate Burton Preliminary Environmental Information Report Indicative Red Line Boundary
- Cable Route Corridor Search Area
- Principal Site
- Cottam Solar Project Preliminary Environmental Information Report Indicative Red Line Boundary
- Cable Route Corridor Search Area
- Principal Site
- Indicative West Burton Energy Park
- Cable Route Corridor Search Area
- Principal Site

**NOTES**  
Contains Ordnance Survey Data © Crown Copyright and database right 2022.  
© Crown copyright and database rights 2022.  
Ordnance Survey 0100031673.

**ISSUE PURPOSE**  
PEI Report  
**PROJECT NUMBER**  
60677969  
**FIGURE TITLE**  
Water Environment Zone Of Interest

**FIGURE NUMBER**  
Figure 17-4



The drawing has been prepared for the use of AECOM's client. It may not be used, modified, reproduced or relied upon by third parties, except as agreed by AECOM or as required by law. AECOM accepts no responsibility, and denies any liability whatsoever, to any party that uses or relies on this drawing without AECOM's express written consent. Do not scale this document. All measurements must be obtained from the stated dimensions.